

## **City Hall**

1000 Commonwealth Avenue



Built in 1932, this is an 81,000 square foot civic building that is individually listed on the National Registry of Historic Places, and houses most of the City departments. Beyond normal municipal operations, City Hall is used for children's programs, art exhibits, open studios, festivals, musical performances, theatrical performances, public meetings, and a variety of other community and cultural programming.

## **Newton Free Library**

330 Homer Street



Built in 1991, this is a 93,000 square foot public library. Beyond traditional library activities, the building is used for children's programs, art exhibits, open studios, musical performances, community educational events, public meetings, and a variety of other community and cultural programming.

## **Auburndale Branch Library**

371 Auburn Street



Built in 1927, this is a 4,830 square foot building. Up until 2008, it was publically staffed and operated as a branch library. Since 2009, it has operated as a volunteer run community library. The building is also frequently used for public meetings and a variety of interior community programs. The Friends of the Newton Library operate a book donation and sale shop out of the basement of the building.

## **Waban Branch Library**

1608 Beacon Street



Built in 1929, this is a 6,378 square foot building. Up until 2008, it was publically staffed and operated as a branch library. Since 2009, it has operated as a volunteer run community library. The building is also frequently used for public meetings and a variety of interior community programs. The Public Buildings Department uses the basement area as a wood shop and repair facility. The facility is also used as a polling center by the Newton Elections Department.



## **Nonantum Branch Library**

114 Bridge Street



Built in 1957, this is a 7,364 square foot building. Up until 2008, it was publically staffed and operated as a branch library. Since 2009, it has operated as a social club. The building is occasionally used for public meetings and a variety of interior community programs.

## **Newton Corner Library(Chaffin House)**

124 Vernon Street



Built in 1848, this is a 10,032 square foot Greek Revival style building. This property was acquired by the City in 1930 for the purposes of conversion to a children's library. Up until 2008, it was publically staffed and operated as a branch library. Since 2008, it went through periods of vacancy, use as Parks and Recreation Headquarters, and its current use as the Newton Innovation Center. The building is also occasionally used for community meeting space.

### **1294 Centre Street**



Built in 1927, this is a 6,050 square foot building that is individually listed on the National Registry of Historic Places. It was closed as a branch library in 1991, and was then used as the Health Department Headquarters until 2013 when they moved to City Hall. Since 2013, the building has been vacant. In 2018, minor investments were made to the roof, masonry, windows, and interior spaces so that the building can be reactivated for public use.

### **Senior Center**

345 Walnut Street



Built in 1938, this is a 9,850 square foot Classical Revival building that is individually listed on the National Registry of Historic Places. Operating exclusively as a branch library up until 1981, the “Senior Drop-In Center” then moved into the building. In 1991, the branch library was closed, and in 1993 the building was renovated into a Senior Center. It currently serves as the center for senior activities and programs for the City. It is also used frequently by people of all ages for a variety of programs, meetings, and events.



## **Crystal Lake Bathhouse**

30 Rogers Street



Built in 1931, this is a 9,581 square foot seasonal building that provides restrooms and changing facilities for use of the Crystal Lake Public Beach for approximately two months during the summer.

## **Hawthorne Field House (Pellegrini)**

17 Hawthorne Street



Built in 1950, this is a 5,752 square foot building that consists of a gym, bathrooms, kitchen, and storage. This facility provides space for after school and summer programs, basketball, volleyball, and pickleball recreational leagues, and support for the adjacent playground and fields.

### **70 Crescent Street (Former P&R HQ)**



Built in 1930, this is a 3,208 square foot residential property that has been used for private purposes, a State Police Facility, and then ultimately acquired by the City and used as the Parks and Recreation Headquarters until 2011. Since then the property has been vacant with the exception of the basement, where Parks and Recreation Maintenance has a break room and restroom. This building has been surplus, and plans call for it to be demolished.

### **Parks and Recreation Maintenance Garage**

#### **70 Crescent Street (Rear)**



Built in 1940, this is a 4,600 square foot block maintenance and storage building. It is currently used by the Parks and Recreation Maintenance Division for equipment storage and repair. This building has been surplus, and plans call for it to be demolished.



### **Lower Falls Community Center (Hamilton)**

545 Grove Street



Built in 1958, this is a 10,519 square foot facility that was once part of the former Hamilton School. It is currently used for daycare, afterschool, and summer programs. The facility is heavily used for summer camps, rentals, volleyball, badminton, basketball, pickleball, dance, yoga, Pilates, Girl Scouts, catch ball, and other municipal activities. It contains a gym, kitchen, classrooms, and offices. The remainder of the physically attached former Hamilton School is owned and operated as the Hamilton Grove Apartments by the Newton Housing Authority.

### **Upper Falls Community Center (Emerson)**

45 Pettee Street



Built in 1904, this is a 13,418 square foot facility that was once part of the former Emerson School. It is currently used for daycare, afterschool, senior activities and summer programs. The facility is heavily used for rentals, basketball leagues, and other municipal activities. It contains a gym, kitchen, classrooms, and offices. The remainder of the physically attached former Emerson School is owned and operated by the Falls Ridge Condo Association.

## **Albemarle Field House**

250 Albemarle Road



Built in 1956, this is a 2,072 square foot facility used for senior programming and summer camps. The senior programming includes yoga, painting sessions, and other social activities. It also provides restrooms for the adjacent fields, and is the source of electrical power for the field complex.

## **Forte Park Field House**

233 California Street



Built in 1960, this is a 750 square foot building which houses restrooms, storage, and electrical power for the adjacent field.



## **Auburndale Cove Field House**

West Pine Street



Built in 1967, this is a 1,329 square foot building which houses restrooms and storage for the adjacent field, but it's primarily used as a warming center when the cove is open for skating and for rentals during the warmer seasons.

## **Burr Park Field House**

142 Park Street



Built in 1919, this is a 5,200 square foot building which is used as a daycare and learning center for preschoolers. This building is also used for a summer camp.

## **Cabot Park Field House**

101 East Side Parkway



Built in 1926, this is a 1,264 square foot building which is used as a daycare facility and summer science programming.

## **Lyons Field House**



Built in 2013, this is a 1,050 square foot building consisting of bathrooms and a concession stand to support the adjacent field.



### **Newton Centre Field House (Hut) (Jeanette Curtis West Recreation Center)**

69 Tyler Terrace



Built in 1892, this is a 5,250 square foot building consisting of a small gym, restrooms, kitchen, storage, and small multipurpose rooms. It was built in 1892 as the Trinity Parish Church, but was acquired by the City in 1898 and moved to its current location. It is used for afterschool, summer programs, vacation camps, zumba, judo, karate, cricket, tap dance, yoga, rentals, and a variety of other programs.

### **Newton Centre Metal Storage Building**

Built in 1980, this is a 1,200 square foot untreated metal storage building used by Parks and Recreation. This building is adjacent to Tyler Terrace across from the Mason Rice School Playground.

### **Bobby Braceland Field House**

98 Pennsylvania Avenue



Built in 1965, this is an 800 square foot building consisting of restrooms and storage. The restrooms are no longer in use, and the building is actively used for park maintenance equipment.

## **Nahanton Park Field House**

455 Nahanton Street



Built in 1996, this is a 2,090 square foot building consisting of restrooms, an office, and a multipurpose room. This building is used for summer programs, boat rentals, eagle scouts, preschool programs, and public meeting space.

## **Gath Pool Facility**

256 Albemarle Road



Built in 1965, this is a 10,350 square foot facility which consists of restrooms, changing rooms, offices, storage, and a large pool support system area. This building is seasonal, and is used for approximately two months during the summer.



## **Quinobequin Pump Station Building**

136 Quinobequin Road



Built in 1980, this is a 4,596 square foot sewer pump station building.

## **Elliot Street Pump Station Building**

391 Elliot Street



Built in 1990, this is a 1,500 square foot sewer pump station building.

## **Elliot Street DPW Stable**

74 Elliot Street



Built in 1927, this 15,858 square foot building is individually listed on the National Registry of Historic Places. . The Stable and Garage building was constructed at a time when the municipality was transitioning from the use of horses to the use of trucks. The design makes use of site grading to allow this transition to happen. The lower floor, with its wide bays opening to the south, was designed for use as a truck garage. The upper floor, accessed by ramps at the east and west, originally housed 26 horse stalls. It was designed for conversion to a garage once the horses were no longer needed. Currently the stable has 71 employees assigned to it. This includes 8 members of the Forestry Division, and 63 members of the Highway Division.

## **Elliot Street DPW Garage**

70 Elliot Street



Built in 1959, this is a 10,500 square foot garage consisting of four bays used for vehicle storage and staging, and two mechanics bays used for repair and maintenance.



## **Elliot Street Salt Shed**

Elliot Street DPW Yard



Built in 1994, this is a 7,800 square foot wood framed open-air structure which houses a large amount of the road salt used by DPW.

## **Utilities Building**

60 Elliot Street



Built in 1935 as a refuse incinerator building, this 21,664 square foot building was renovated in 1997 for the current use as the Utilities Division Facility. Added to the rear of the 1935 building, is a six garage bay metal prefab addition used for Utilities Division vehicle storage. The original building consists of parts storage on the first floor, a large break room, water meter storage room, and a small office on the second floor, and a handful of offices and a large conference room on the third floor. There are 66 employees assigned to this building, with only 6 of them routinely using office space scattered throughout the three floors. The other 60 Utility employees assigned to this building use it for timeclock and breakroom access.

## **Public Buildings Department**

52 Elliot Street



This building is 7,640 square feet. The building is comprised of a 3,780 square foot concrete block garage built in 1968, a 1,700 square foot metal prefab garage added in 1976, and a 2,160 square foot wood framed modular section added in 1980. This facility has 25 employees assigned to it, 12 of which have assigned offices that are heavily occupied. The other 13 employees are trades craftsmen who use the facility for work assignments and bathrooms.

## **Craft Street Stable**

90 Craft Street



This is an 18,900 square foot building that was built in 1894. The Crafts Street City Stable is a two and a half story brick L-shaped structure with a steep hipped roof designed in the Colonial Revival Style by the architect William F. Goodwin. The building is the second of two stables constructed by the City of Newton in the mid-1890s to house the horses, wagons and other equipment owned by Newton's Highway Department. This building consists of three floors. The first floor is predominantly cold storage. The second floor is split between heated storage, offices, bathrooms, and a large breakroom. The attic is cold storage. This building is used by 7 beautification employees who work for the Parks and Recreation Department.



## **Craft Street Garage**

110 Craft Street



This is a 21,000 square foot garage, with a 5,775 square foot attached building to the north. This structure was built in 1919, renovated 1936, and then again in 1986. This garage building consists of 15 bays for the repair and maintenance of the municipal fleet, which consists of approximately 350 vehicles and apparatus. Additionally, the garage contains a repair parts stockroom, as well as a central office. Connected to the north side of the garage in 1936, the Transportation and Environmental Division building contains a single garage bay, the sign shop, and office space, supporting 7 office staff and 14 field employees. The Fleet Division operates out of the garage, and consists of 2 office staff, and 12 fleet service employees.

## **Craft Street Salt Shed**

Craft Street DPW Yard



Constructed in 2014, this facility is 6,305 square feet and houses road salt for the north side of the City. The building is a fabric membrane, stretched over a steel structure, with a v-block concrete foundation.

## **Craft Street Equipment Storage Shed**

Craft Street DPW Yard



Constructed in 2014, this facility is 3,570 square feet and is used for equipment and vehicle storage. The building is a fabric membrane, stretched over a steel structure, with a v-block concrete foundation.

## **Craft Street Wash Building**

Craft Street DPW Yard



Constructed in 1986, this building is 1,056 square feet and consists of a single wash bay, with a small room to the south which contains the support systems.



## **Craft Street Sweeper Shed**

Craft Street DPW Yard



Constructed in the 1980's, this 900 square foot prefab metal storage building is used to house sweeper brushes and repair parts for the street sweepers.

## **Rumford Avenue Landfill Office**



Built in 1950, this 400 square foot building is an office and warming area for the DPW employees who staff the recycling and processing center.

## **Manet Road Reservoir Gatehouse Building**

2 Manet Road Rear



Built in 1925, this is a 1,507 square foot building which supports the Manet Road Reservoir.

## **Waban Hill Reservoir Gatehouse Building**

Ward Street



Built in 1875, this is a 214 square foot Waban Hill Reservoir Gatehouse.



## **Fire Station #1**

241 Church Street



Built in 1965, this is a 14,808 square foot fire station with 3 apparatus bays.

## **Fire Station #2**

1750 Commonwealth Avenue



Built in 1964, this is a 24,700 square foot fire station with 4 apparatus bays.

### **Fire Station #3**

31 Willow Street



Built in 2017, this is a 23,973 square foot fire station with 5 apparatus bays, training facilities, an emergency operations center, emergency communications equipment and tower, and the Newton fire museum.

### **Fire Station #4**

195 Craft Street



Built in 1955 and renovated in 2010, this is a 14,780 square foot fire station with 4 apparatus bays, and a training room.



### **Fire Station #7**

144 Elliot Street



Built in 1955 and renovated in 2012, this is a 16,100 square foot fire station with 3 apparatus bays fronting Elliot Street, and 3 mechanics bays down back. This building contains the Fire Mechanics Division which handles the light maintenance and repair of the fire apparatus and equipment.

### **Fire Station #10**

755 Dedham Street



Built in 2015, this is a 6,731 square foot fire station with 2 apparatus bays. A confined space rescue training facility and drafting tank are located behind this facility.

## Fire Headquarters

1164 Centre Street



Built in 1928 and renovated in 2017, this is a 6,130 square foot Fire Headquarters building which houses the Fire Prevention Division, Newton Fire central administration, and the Chief's Office.



## **Wires Division Building**

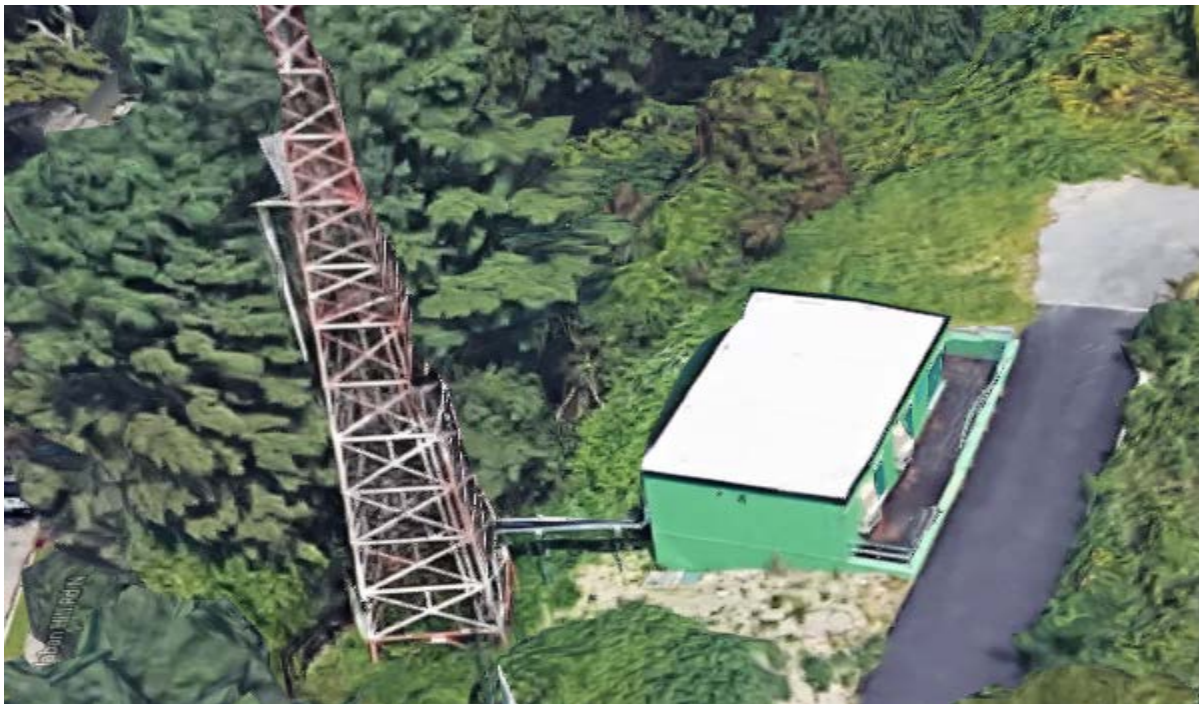
755 Dedham Street Rear



Built in 2015, this is a 4,036 Fire and Wires Division building. It consists of 2 maintenance bays, wire spool storage, offices, a conference room, and a breakroom.

## **Manet Road Communications Building**

2 Manet Road



Built in 2016, this 836 square foot prefab concrete building houses communications equipment.

## **Ober Road Communications Building**

Ober Road



Built in 2018, this 160 square foot prefab wood framed shed houses communications equipment.

## **Police Headquarters**

1321 Washington Street



Built in 1932, and renovated in 1993, this 20,676 square foot building houses Dispatch, Patrol, Detectives Bureau, Special Operations, Information Technology, Details, and the Chief's Office. Headquarters also houses the small training room, fingerprint lab, cell blocks, sally port, gym and locker rooms, firing range and armory, server room, and museum displays. The building operates 24/7/365, with varying staff levels throughout the day and night.



## **Police Garage**

1321 Washington Street Rear



Built in 1959, and partially renovated in 1993, this 7,548 square foot cinder block slab on grade building houses mechanical repairs, storage, property and evidence, and support services.

## **Police Annex**

25 Chestnut Street



Built in 1925 as a branch library, this is a 4,528 square foot building. It was closed as a branch library in 1984, and is currently used as an annex to Police Headquarters. It houses the Detectives Division on the main floor, and Animal Control, Community Services, and a number of other police functions and offices in the basement.

## **Jackson Homestead**

527 Washington Street



Built in 1809, this 7,212 square foot Federal Style field stoned foundation residential building is individually listed on the National Registry of Historic Places, as well as the National Park Service's National Underground Railroad Network to Freedom. This property was acquired by the City of Newton in 1949, and opened to the public in 1950 as the City Museum. In 2015, a large capital project renovated the archives sections of the building, made significant accessibility improvements to the entrance and main floor, and installed fire suppression and detection systems throughout the building. It houses museum staff and patrons.

## **Kennard Estate**

246 Dudley Road



Built in 1907, this 15,715 square foot Shingle-style field stoned foundation residential property was acquired by the City in 1978. It currently houses the Parks and Recreation administrative and program offices.



## **Bringham House**

20 Hartford Street



Built in 1883, this 5,081 square foot Queen Anne style residential property was acquired by the City in 1951 for use as a branch library. The building did not open to the public until after a renovation/addition in 1958. In 2001, the City leased the building for the purposes of a teen center and social services. The building was renovated in 2009.

## **150 Jackson Road**



Built in 1965, this 102,264 square foot building was the former Aquinas Junior College. The convent and chapel make up 26,264 square feet, while the other 76,500 square feet are the academic spaces. The City acquired this property in 2015, and replaced the windows in 2016. It is currently occupied by the Newton Early Childhood Program, also known as the Preschool Program, and they are using the first and second floors of the academic core. The convent and chapel are vacant. The auditorium and cafeteria are periodically used for programming and rentals.

## **Angino Farm**

303 Nahanton Street



Built in 1855, this 5,028 square foot residential property was acquired by the City in 2004 and it has been occupied by the Angino Farmer since 2006.

## **Angino Farm Barn**

303 Nahanton Street Rear



Built in 1886, this 2,888 square foot barn was acquired by the City in 2004, and was renovated in 2008. It contains a community kitchen, large multipurpose room, restrooms, and storage.



