

NewCAL

Design Review Committee

January 11, 2023



Agenda

- Floor plans Development
- Interior Development
- Exterior Elevations

Highland Avenue

Walnut Street

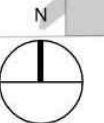
Washington

Walnut Place

Walnut Place

Site Plan

0' 15' 30' 60'



Highland Avenue

Walnut Street

FIRST FLOOR

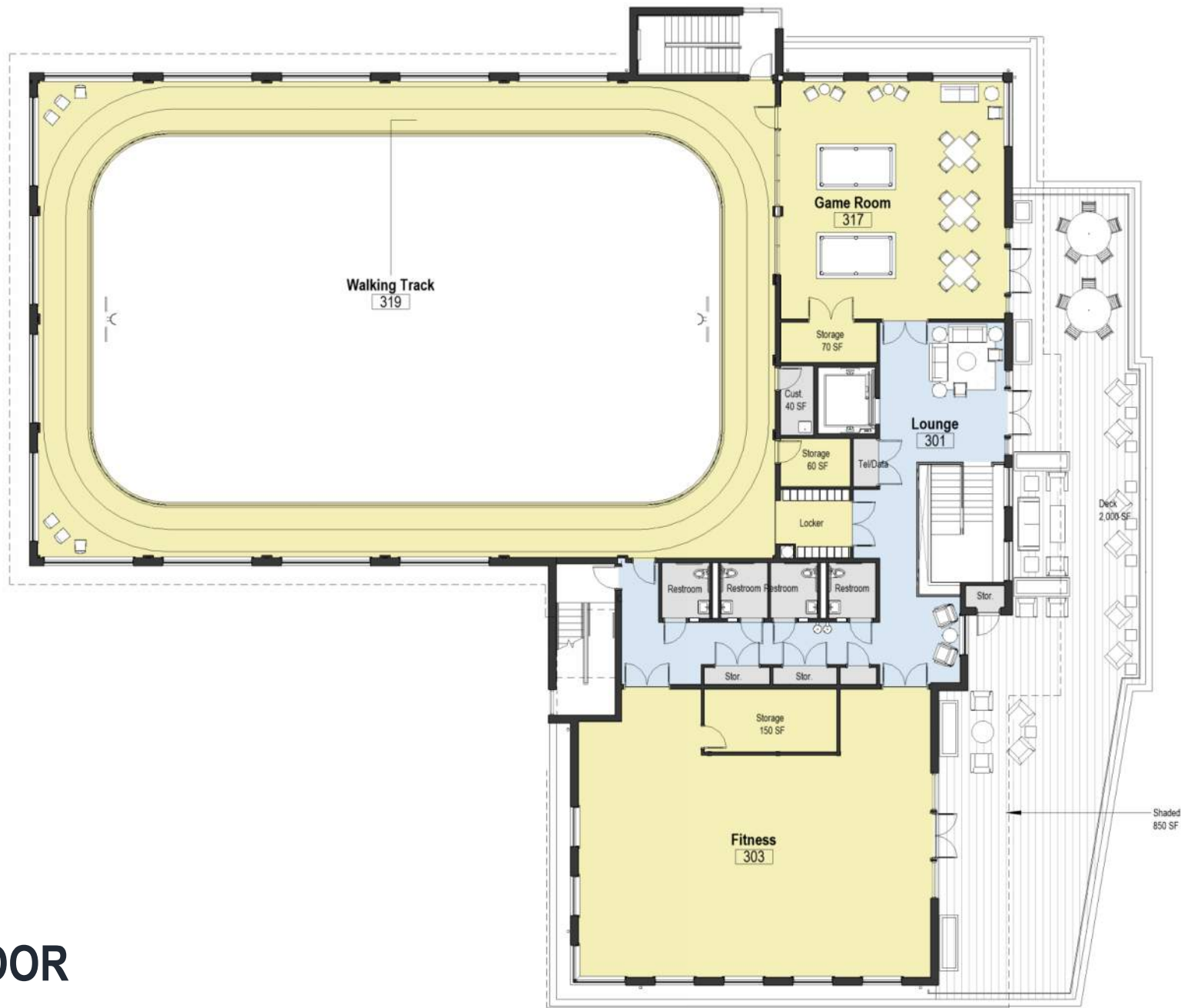


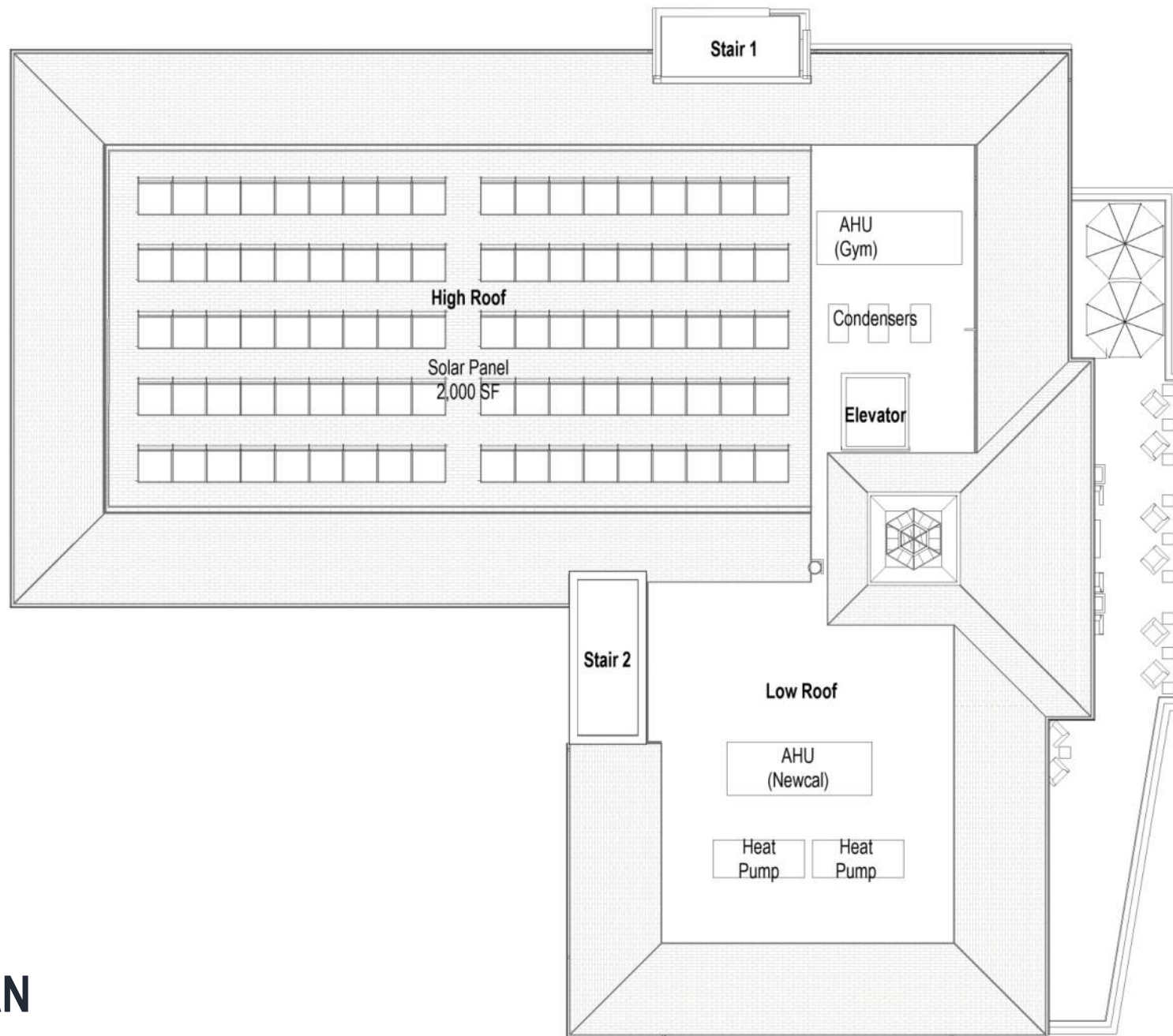
Walnut Place

FLOOR

The floor plan shows a large yellow Gym 231 on the left. To its right are three purple activity/conference rooms: Activity #1 235, Activity #2 237, and Conf. Room 239. Below these is a large purple room containing Art 205 and Kiln / Ceramics 206. At the bottom center is an orange-colored Senior Services area 213, which includes several restrooms, a staff room, a kitchen, and two SHINE spaces (70 SF and 80 SF). To the left of Senior Services are an office and a director's room. To the right of Senior Services is another purple room labeled Activity #3 208. Various storage areas and utility rooms like AV, Cust, and Tel/Data are also indicated.

THIRD FLOOR





ROOF PLAN

Interior Perspectives



Lobby View at Entry



Lobby Communicating Stair



Lobby View Towards Multiple Purpose Room



Second Floor Stair to Third Floor



Third Floor



Third Floor Lounge



Gymnasium



Walking Track

Exterior Elevations

Previous



Highland Avenue Elevation

Proposed



Highland Avenue Elevation

Previous



Walnut Place Elevation

Proposed



Walnut Place Elevation

Previous



Roof
47'-4"

3RD FLOOR
35'-4"

2ND FLOOR

West Elevation

Proposed



Roof
47'-4"

3RD FLOOR
35'-4"

2ND FLOOR

West Elevation

Proposed



Roof
47'-4"

3RD FLOOR
35'-4"

2ND FLOOR
21'-4"

Walnut St Elevation



Walnut Street and Highland Avenue

Thank You